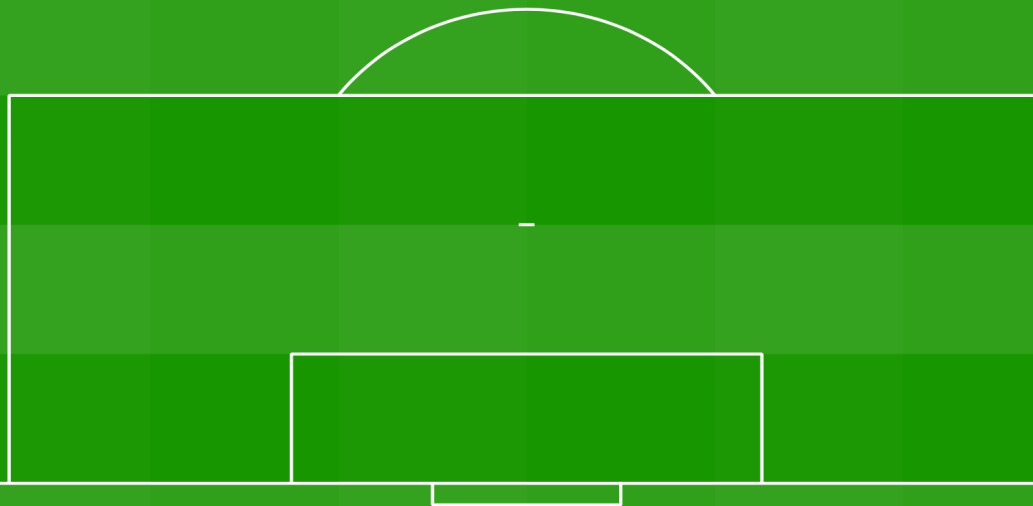
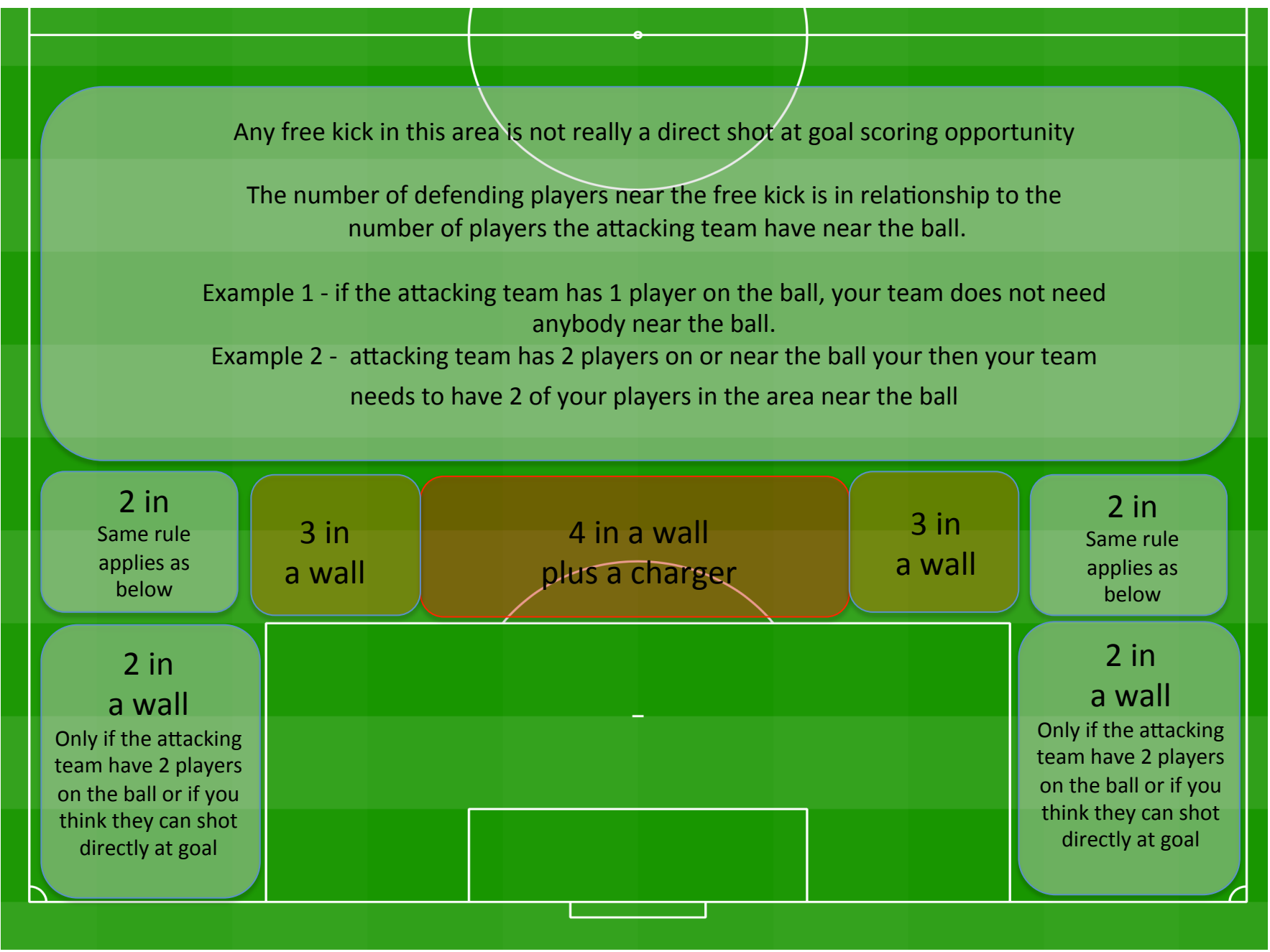


# Setting up a wall





Any free kick in this area is not really a direct shot at goal scoring opportunity

The number of defending players near the free kick is in relationship to the number of players the attacking team have near the ball.

Example 1 - if the attacking team has 1 player on the ball, your team does not need anybody near the ball.

Example 2 - attacking team has 2 players on or near the ball your then your team needs to have 2 of your players in the area near the ball

**2 in**  
Same rule  
applies as  
below

**3 in  
a wall**

**4 in a wall  
plus a charger**

**3 in  
a wall**

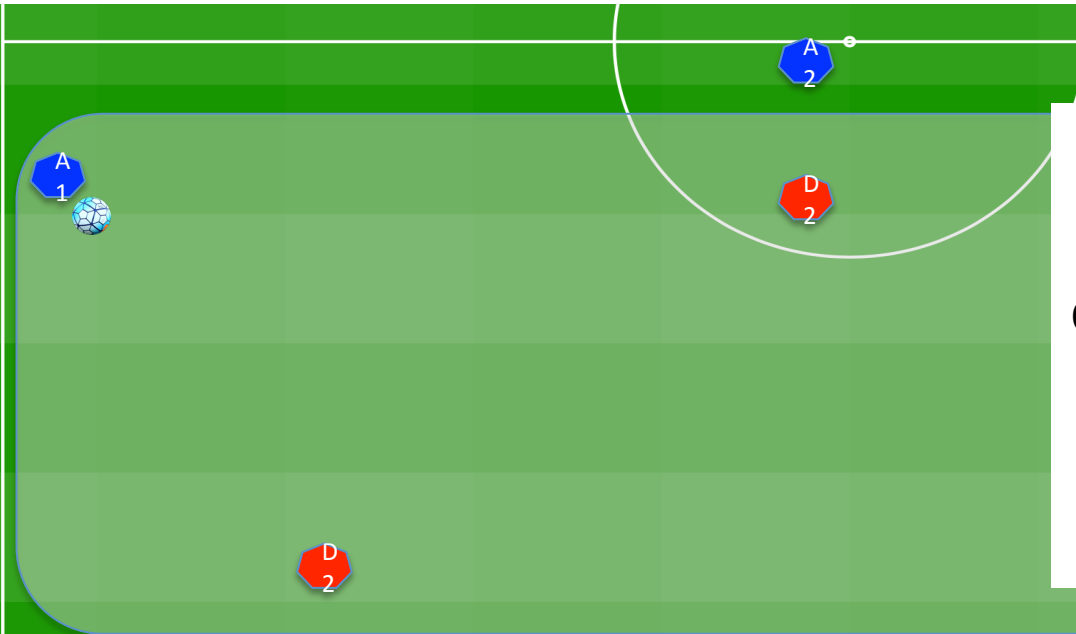
**2 in**  
Same rule  
applies as  
below

**2 in  
a wall**

Only if the attacking  
team have 2 players  
on the ball or if you  
think they can shot  
directly at goal

**2 in  
a wall**

Only if the attacking  
team have 2 players  
on the ball or if you  
think they can shot  
directly at goal



Example 1

In this situation you do not need a defender near the ball. One player taking the free kick so he can not make a short pass to anybody. He/she must play a long pass into the attacking area

2 in a wall

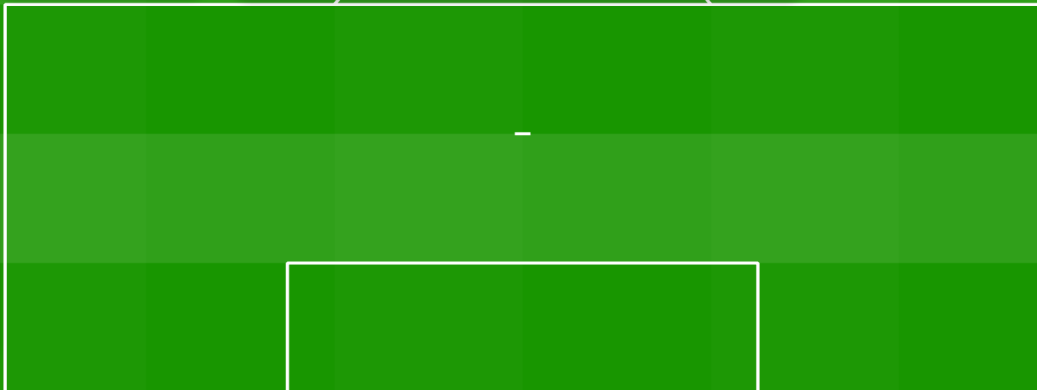
3 in a wall

4 in a wall plus a charger

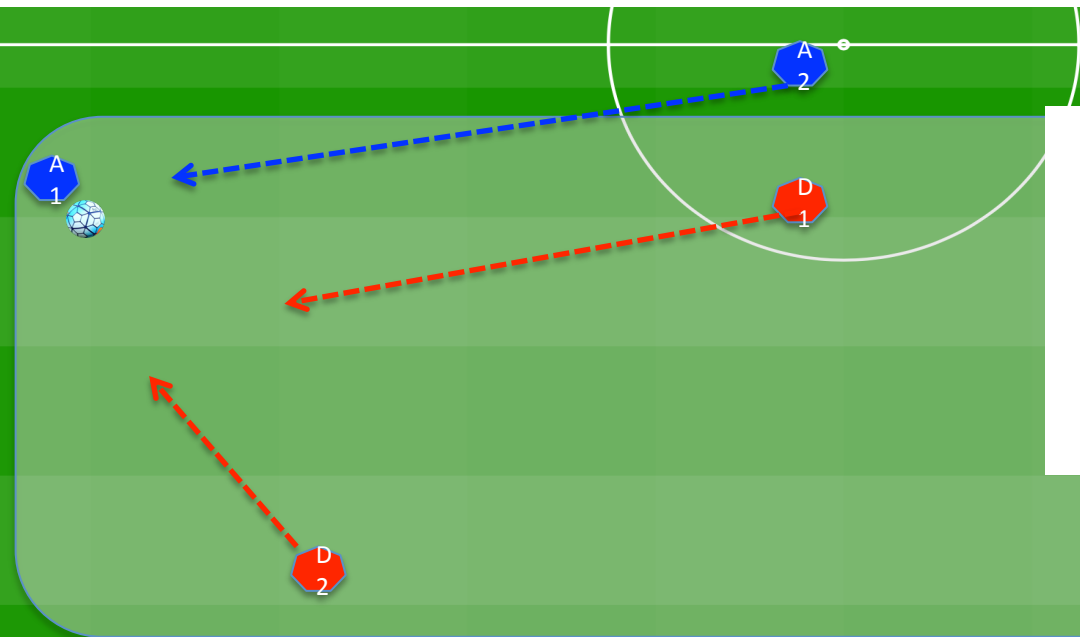
3 in a wall

2 in a wall

2 in a wall



2 in a wall



Example 2  
A second attacking player goes towards the ball.  
The defending team must then have 2 defending players in the same area

2 in a wall

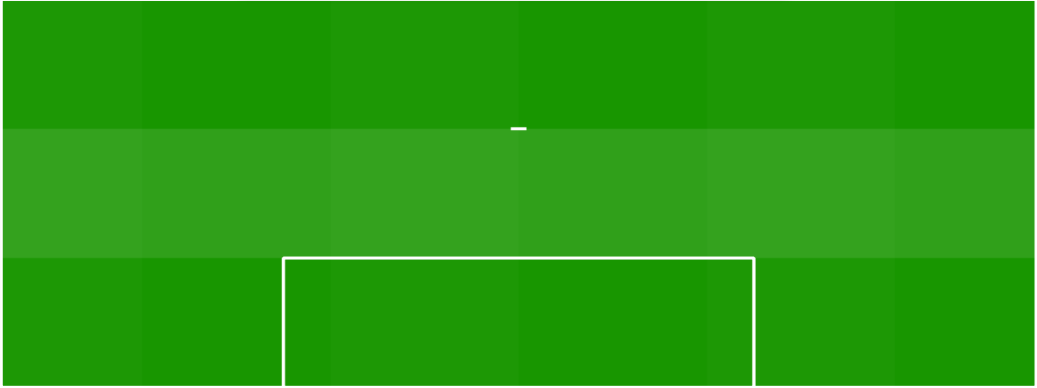
3 in a wall

4 in a wall plus a charger

3 in a wall

2 in a wall

2 in a wall

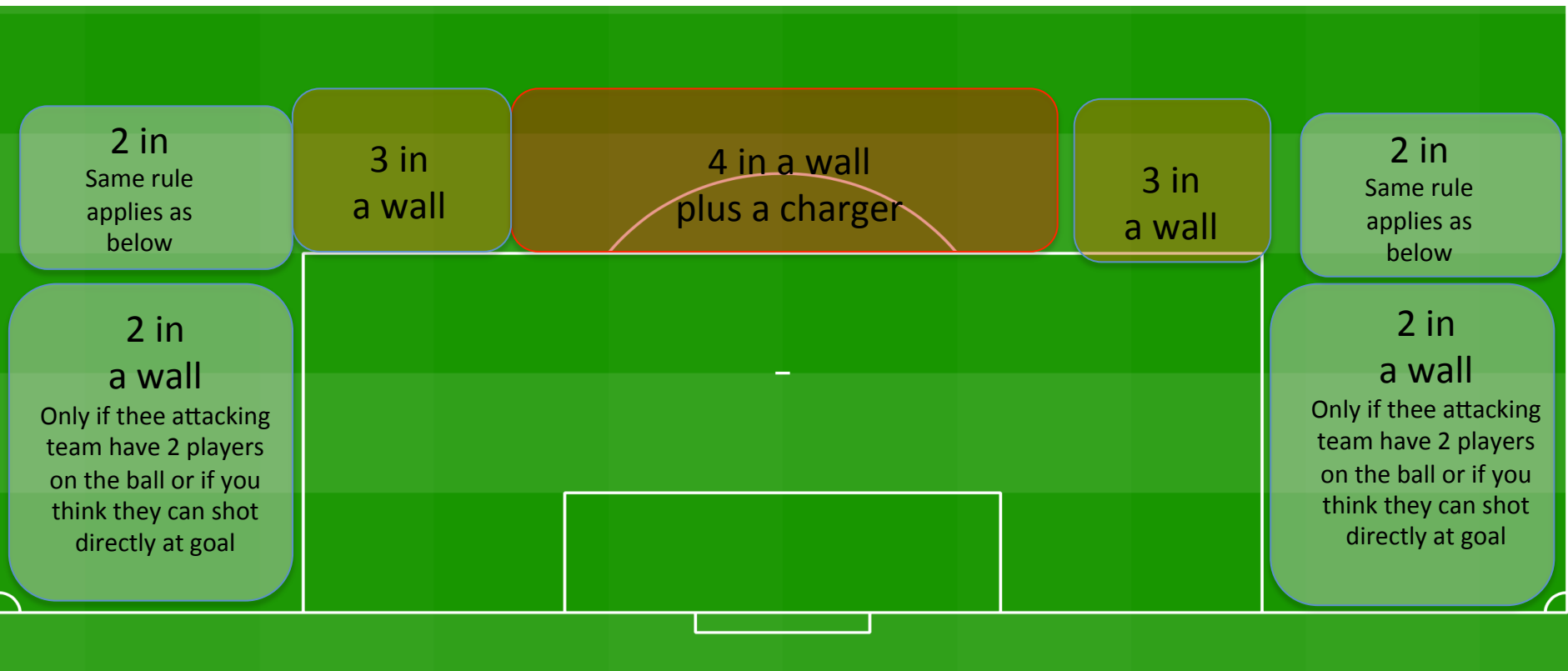


2 in a wall

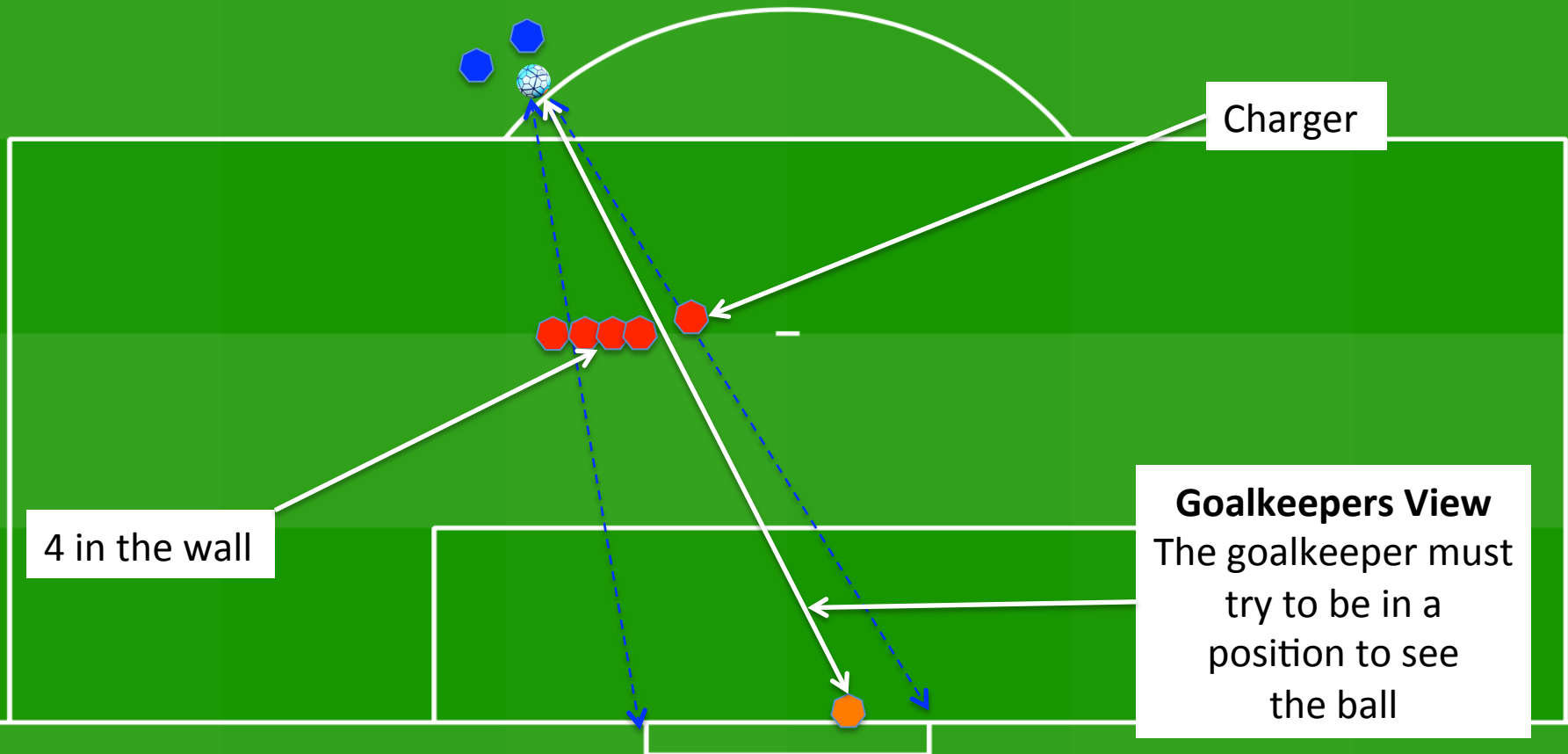
# How to set up a wall.

This is difficult to explain as there are so many different situations that require different defensive set ups, but here are a couple simple rules to try to follow.

- 1 - Number of players in the wall is in relationship to the threat of a direct shot on goal.
- 2 - Goalkeeper must be able to see the ball at all times.
- 3 - Early communication. Try to decide how many defenders you want in a wall as quickly as possible. Be clear in your instructions



4 in a wall  
plus a charger



4 in the wall

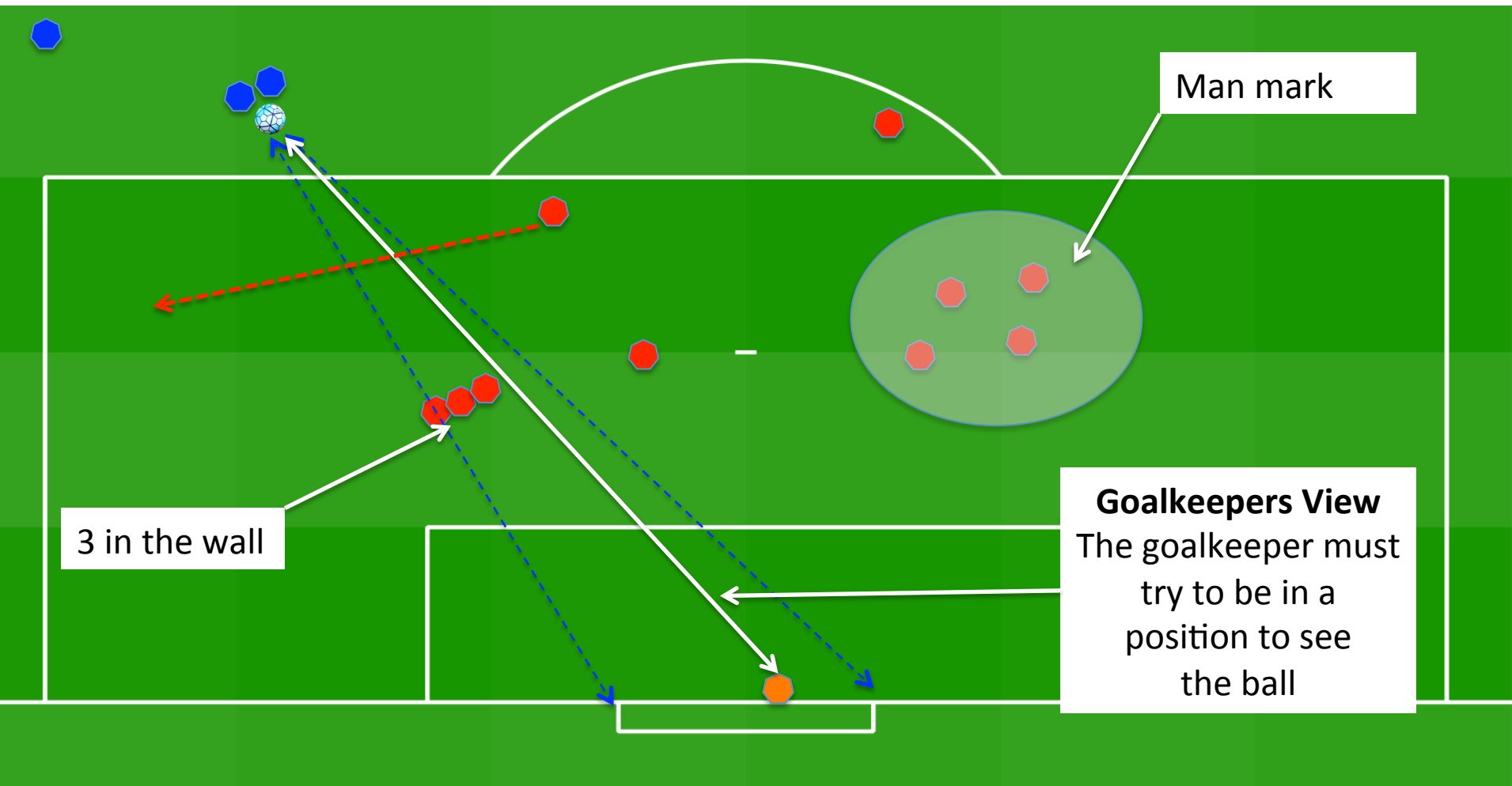
Charger

**Goalkeepers View**

The goalkeeper must  
try to be in a  
position to see  
the ball

3 in a wall

Two goal scoring threats  
1 – direct shot at goal  
2 - Potential cross



**2 in  
a wall**

Only if the attacking team have 2 players on the ball or if you think they can shot directly at goal

**2 in  
a wall**

Only if the attacking team have 2 players on the ball or if you think they can shot directly at goal

